



**WEBER**

# Abrasive machines for metal



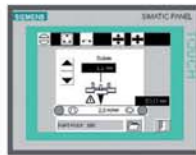
**Double  
Rotation**

# Deburring • Deslagging • Edge Round

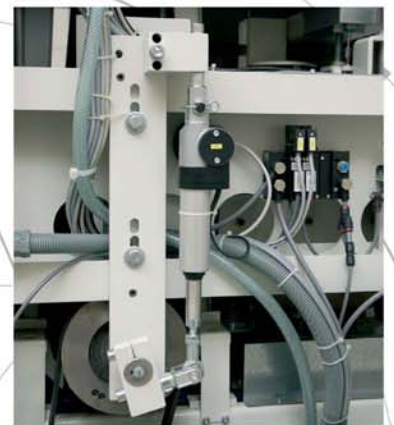
**WEBER**



WEBER TTS P  
Planetary only



Automatic workpiece thickness measurement



Motorized contact roll adjustment

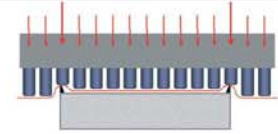


# WEBER

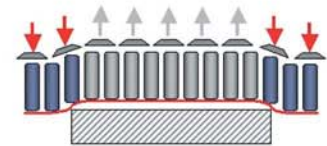
## STC Bolt Grinding Beam

This innovative technique for deburring of flame, plasma cut and thicker laser parts. The combination of drum, flexible abrasive belt and the proven bolt grinding beam.

- Constant grinding result
- no secondary burrs
- tolerance compensation of several millimeters
- multiple part feeding
- long abrasive belt life
- electronic control optional



CPU

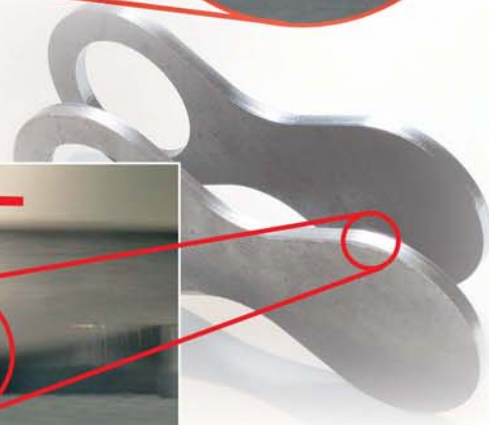
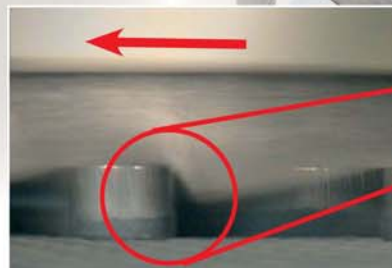
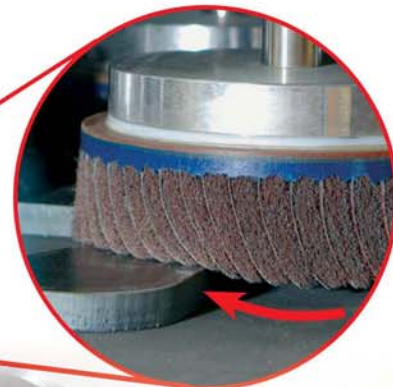
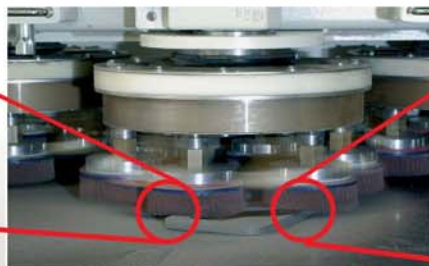


(Electronic system)

## WEBER DR Planetary Head ... ... contacting + circulating = 100%

The innovative technique for edge rounding and removal of the oxide layer.

- double rotation • guaranteed repeatable results
- perfect finishing • long tool life



# WEBER

## Wet Grinding Technique

This innovative technique uses corrosion-resistant materials. The drive elements are located in the dry area. The water filtration is of large-scale design, an automatic cleaning cycle increases the productivity and reduces the maintenance intervals.

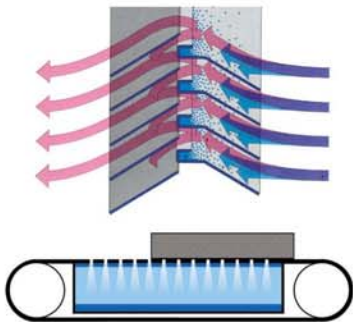
- High water flow filtration
- Vacuum execution of the conveyor table
- WEBER water separator for the vacuum table
- Machine outfeed for small parts
- Easy access to spraying nozzles
- Air knife dryer
- Centrifuge coolant filter
- Paper bed coolant filter



WEBER TN



WEBER NLC



Water separator for conveyor table with vacuum



Machine outfeed for small parts



Quick change spray nozzle pipe



Squeeze rollers and air knife dryer



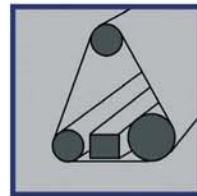
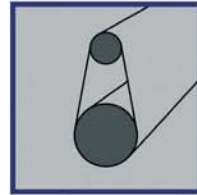
Centrifuge coolant filter



Paper bed coolant filter

# Deburring • Deslagging • Edge Round

**WEBER**



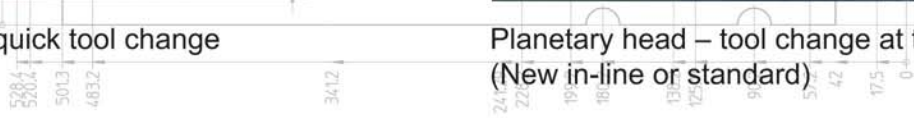
WEBER TT / MKS



Planetary head - quick tool change



Planetary head – tool change at the rear  
(New in-line or standard)





# WEBER

## Machines for your job

Our machines are based on a unique modular construction system - a large number of possible combinations meet every requirement.

Head equipment	WEBER metal grinding machine series							
	MKV	MK	MKS	TTS P	TTS 1	TT	TN	NLC
Grinding roller	●	●	●	x	●	●	●	●
STC bolt grinding beam	●	●	●	x	x	x	x	x
DR planetary head P (2)*	x	●	●	x	●	x	x	x
DR planetary head P (6)	●	●	●	●	x	●	●	●
Wire brush	●	●	●	x	●	●	●	●
Scotch Brite roller	x	x	x	x	●	●	●	●
Wet grinding	x	x	x	x	x	x	●	●

\*In-line

● = possible head equipment

x = heads cannot be installed

## WEBER Tradition and Innovation



### Quality from Upper Franconia

The company, founded more than 100 years ago, has manufactured abrasive machines from the beginning. The WEBER machine factory has a long tradition of innovative and high quality machine construction. More than 300 people are employed at two locations.

Hans Weber Corp.  
 PO Box 3387  
 Olathe, KS 66063-3387  
 info@weberamerica.com  
 Phone ++1-913-254-1611  
 Toll Free ++1-877-519-9795  
 Fax ++1-913-254-1582  
 www.weberamerica.com



Hans Weber  
 Maschinenfabrik GmbH  
 Bamberger Str. 19 – 21  
 D-96317 Kronach  
 Tel. +49 (0) 92 61 409-0  
 Fax +49 (0) 92 61 409-399  
 e-mail: info@hansweber.de  
 www.hansweber.de